



3 Bedroom House

at Newlands of Stow

House 11

SPECIFICATIONS

Total area 123sqm or 1325sq.ft

Kitchen/Breakfast Room

4.88m x 2.60m or 16.0ft x 8ft 6ins

Living Room

6.56m x 3.25m or 21ft 6ins x 10ft 8ins

Dining Room

4.68m x 2.32m or 15ft 4ins x 7ft 7ins

Bedroom 1

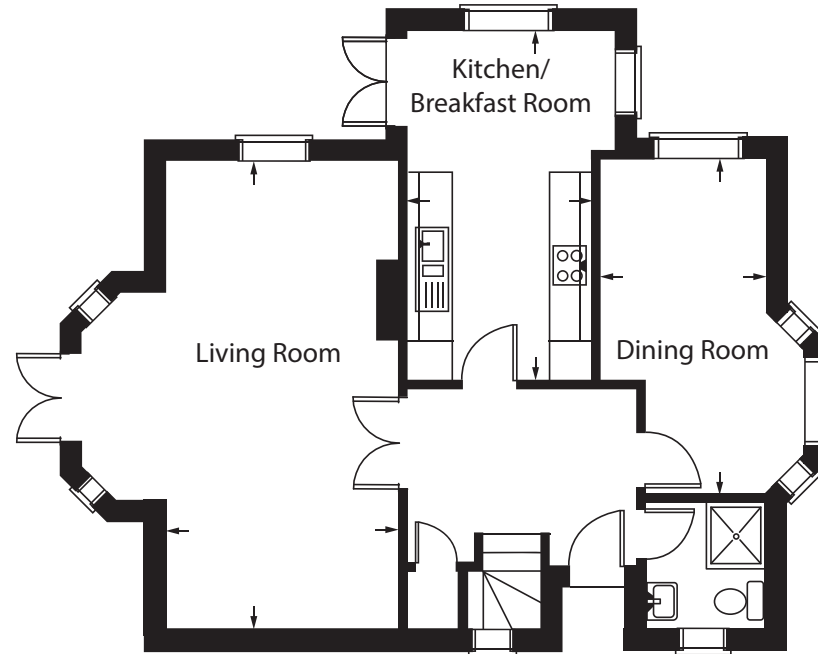
4.67m x 3.24m or 15ft 4ins x 10ft 8ins

Bedroom 2

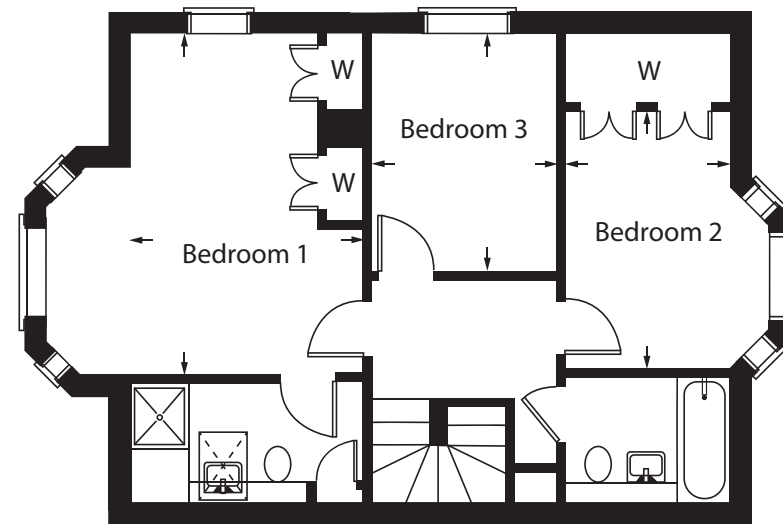
3.59m x 2.31m or 11ft 9ins x 7ft 7ins

Bedroom 3

3.30m x 2.62m or 10ft 10ins x 8ft 7ins



GROUND FLOOR



FIRST FLOOR

Newlands, Evesham Road, Stow on the Wold, Gloucestershire, GL54 1EJ.

01451 870 077 www.newlandsofstow.co.uk

All properties are sold unfurnished. All dimensions are approximate, the longest dimension is shown. Kitchens are equipped with integral oven, hob, fridge/freezer, washer/dryer, dishwasher and microwave.