



2 Bedroom Apartment at Newlands of Stow

Apartment 5

SPECIFICATIONS

Total Area 106.80m² or 1150 sq.ft

Kitchen

4.61m x 2.23m or 15ft 2ins x 7ft 4ins

Lounge/Dining Room

5.75m x 5.47m or 18ft 10ins x 17ft 11ins

Cloaks

1.9m x 1.3m or 6ft 3ins x 4ft 3ins

Bedroom 1

4.61m x 3.1m or 15ft 2ins x 10ft 2ins

Bedroom 2

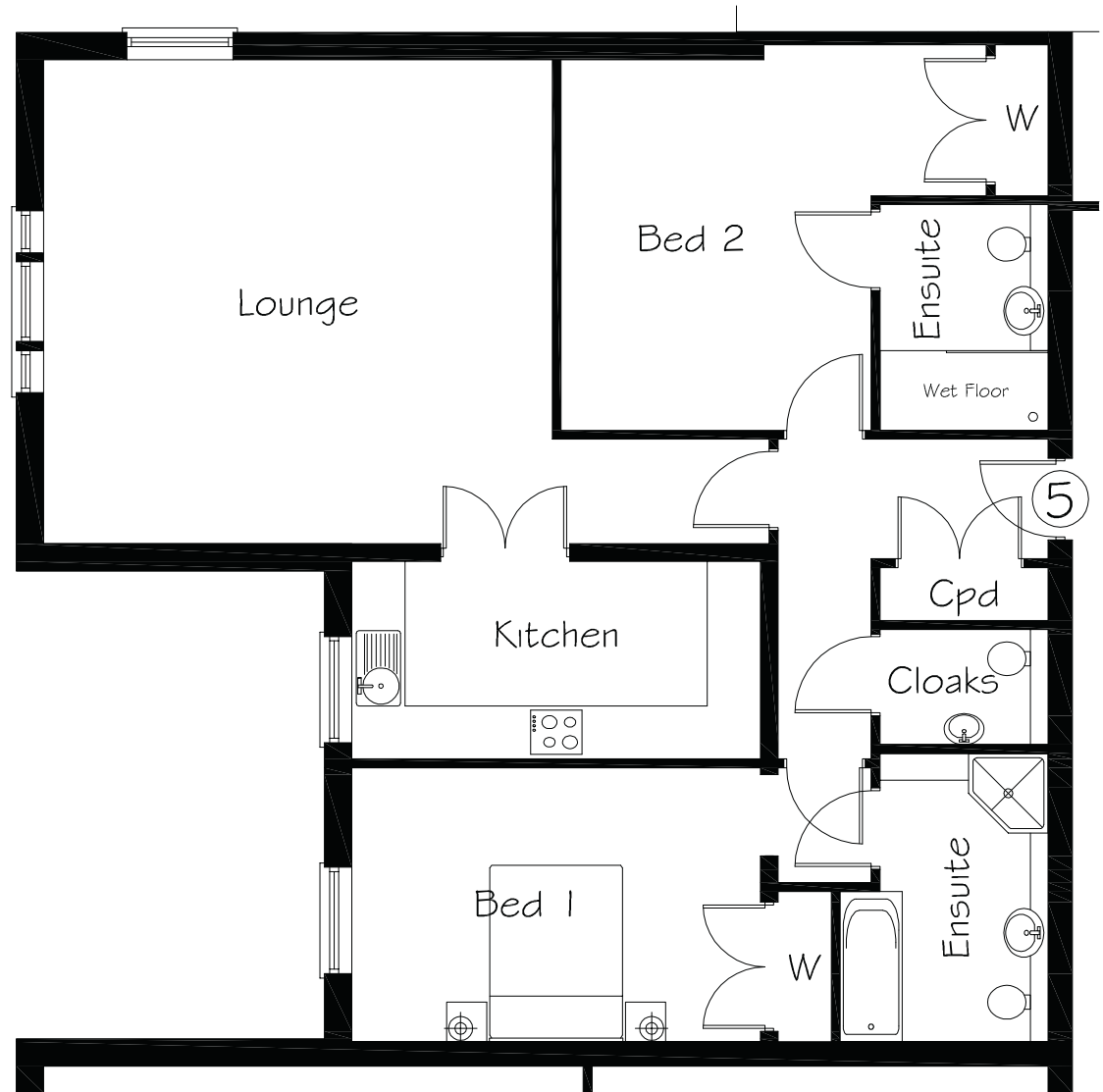
4.19m x 3.5m or 13ft 9ins x 11ft 6ins

En-Suite (Bed 1)

3.26m x 2.35m or 10ft 8ins x 7ft 9ins

En-Suite (Bed 2)

2.55m x 1.9m or 8ft 4ins x 6ft 3ins



Newlands, Evesham Road, Stow on the Wold, Gloucestershire, GL54 1EJ.

01451 870 077 www.newlandsofstow.co.uk

All properties are sold unfurnished. All dimension are approximate, the longest dimension is shown. Kitchens are equipped with integral oven, hob, fridge/freezer, washer/dryer, dishwasher and microwave.